

OVERVIEW

Captaris Workflow, powered by Teamplate

Captaris Workflow is the solution for rapid business process automation in Microsoft environments, offering different benefits to each group of users, including:

- Information Workers
- Software Designers
- Business Managers
- System Administrators

INFORMATION WORKERS

Anytime, Anywhere Work Access - Captaris Workflow gets the work done without restricting the Information Worker. Captaris Workflow solutions allow for a variety of client deployments—Microsoft Windows, Web and Wireless. Through the use of Client Workflow Services, Captaris Workflow can deliver tasks in an "Instant Messaging-Like" format (i.e., "You Have A Task!").

Wizard-driven Workflow Configuration - Where business rules permit, Information Workers can configure workflow. Configuration is Wizard-based—ensuring workflow integrity and creating an easy-to-use interface for Information Workers.



Captaris Workflow operating on Microsoft Pocket PC

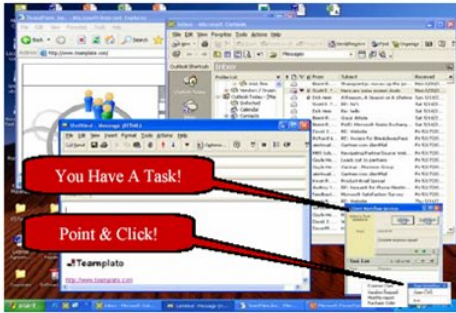
Work Management - Captaris Workflow allows for a variety of work management options. Information Workers can work from a Captaris Workflow task list, an Outlook task list, an executable Workflow map or from the unique Client Side Workflow Services. Captaris Workflow integrates natively with Microsoft technologies, allowing workflow and tasks to seamlessly integrate with Microsoft Office, Microsoft Content Management Server, Microsoft SharePoint Portal Server, Microsoft Exchange Server and Microsoft Business Solutions deployments.

SOFTWARE DESIGNERS

Rapid Development of Workflow Solutions - Software Designers are provided with a robust Integrated Development Environment (IDE) to rapidly create workflow solutions. The IDE has a number of powerful development features, presented in standard Microsoft development tool formats:

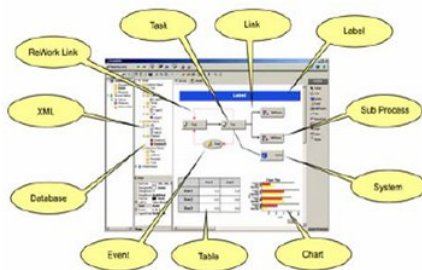
- Drag-and-drop workflow mapping
- Drag-and-drop Workflow Components
- Wizard-driven component definition
- XML binding and Web services wizards
- Verification and intellisense
- Drag-and-drop Microsoft Visio importing

For complete information on the components of the workflow IDE, refer to the Captaris Workflow Technical Review.



Client Workflow Services with Captaris Workflow

Unlimited Workflow Capabilities - Using Captaris Workflow, Designers are able to create a workflow solution for any business situation. Captaris Workflow allows for a nesting of workflows, event monitoring, task skipping and out of office options.



Captaris Workflow Design Environment, with tools highlighted

Portal Capabilities - When the full, executable workflow map is deployed as the interface, Designers can present information to Information Workers through labels, charts and views to other applications.

Rapid Integration - Captaris Workflow is intended to extend and interconnect enterprise applications. Workflow solutions can be easily integrated into Legacy, ERP, LOB, CRM, Portal and Document Management platforms. The Captaris Workflow IDE provides rapid, flexible Enterprise Application Integration, through the Web Services Objects and native integration with Microsoft BizTalk Server.

SYSTEM ADMINISTRATORS

Captaris Workflow provides System Administrators with all of the tools needed for hassle-free administration.



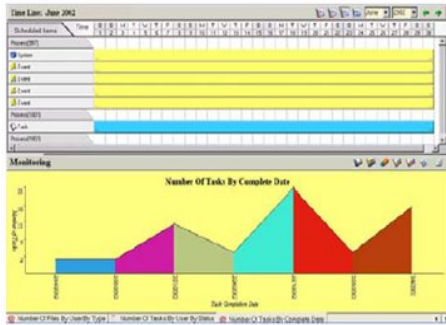
A Captaris Workflow Relationship Grid.

Easy Deployment - Captaris Workflow is built entirely on industry standards—XML, HTTP, TCP and Web Services. The architecture allows for a variety of client platforms, including client/server, Web browser and wireless. Remoting is a key feature, allowing Administrators to avoid firewall based difficulties. Finally, Administrators using the Microsoft Active Directory are provided with a bi-directional Active Directory/Captaris Workflow synchronization tool.

Easy Management - Captaris Workflow provides relationship and profile grids for Administrators. The grids are graphic, on a drag-and-drop canvas. Both Profile and Relationship grids can be applied by organization, by role, by business process or by individual business tasks.

BUSINESS MANAGERS

Captaris Workflow solutions provide valuable activity monitoring and work management features.



Business Activity Monitoring (BAM) - Business Activity Monitoring solutions can range from event alerts and "lack of response" escalation alerts to robust metric-based reporting of critical activities. A key feature allows for events to be "outside" of the workflow. With the unifying capability of Workflow applications, enterprise-wide business processes can be monitored and improved.

Work Management - Business Managers are also able to organize their tasks through the task list, workflow process map interface or Pop-up reminders that are available to Information Workers. Workflow integrates natively with Microsoft technologies, allowing seamless personalization of Microsoft Content Management Server, Microsoft SharePoint Portal Server, Microsoft Exchange Server and Microsoft Business Solutions platforms.

FOR MORE INFORMATION

Captaris Business Information Delivery solutions help organizations of all sizes automate the information and document flow throughout the information lifecycle (capture, process, archive, deliver). With a comprehensive suite of software and services, Captaris helps organizations to grow revenues and increase profits while meeting compliance goals. Through a global distribution network of leading enterprise technology partners, Captaris has installed more than 90,000 systems in 95 countries in companies of all sizes, including the entire Fortune 100. For more information, visit www.captaris.com or call +1.800.443.0806.

©2005 Captaris. All rights reserved. No part of this publication may be reproduced, transmitted, transcribed, stored in a retrieval system, or translated into any language in any form by any means without the written permission of Captaris. Captaris products Alchemy, Interchange, RightFax and Captaris Workflow are trademarks of Captaris. All other company, brand and product names are the property and/or trademarks of their respective companies. MC0010084 RB0405